

Surrey, Canada

Canada's Gateway to the United States and
the Indo-Pacific Region

A stylized map of Surrey, Canada, with a white dot marking the location. The map is set against a background of orange and yellow gradients. The word 'Surrey, Canada' is written in white text next to the dot.

Surrey,
Canada

안녕하세요 ਸਤ ਸ੍ਰੀ ਅਕਾਲ

Kamusta こんにちは

Xin Chào 你好

Bonjour Ciao

Hello سلام

Hola

नमस्त

Companies Choose to Grow in Surrey

1

Surrey is the only major Canadian city along the border with the US and direct access to the Indo-Pacific Region

2

Access to one of the fastest growing, diverse metropolitan centres in North America

3

An innovation and research powerhouse in Western Canada

4

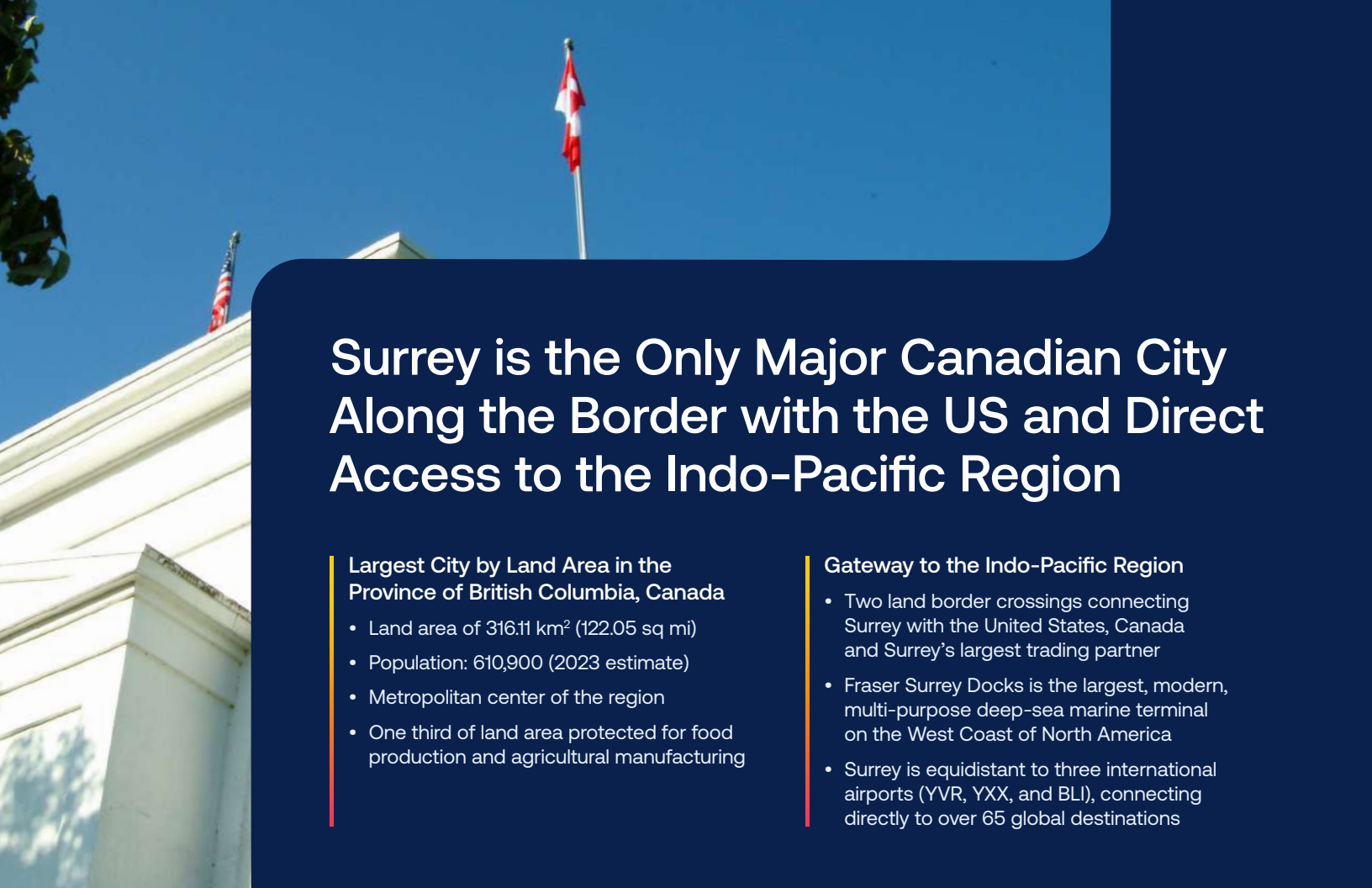
Proactive investments in progressive, future-ready infrastructure

5

A major North American manufacturing hub in the Pacific Northwest

6

Benefit from the maple leaf advantage



Surrey is the Only Major Canadian City Along the Border with the US and Direct Access to the Indo-Pacific Region

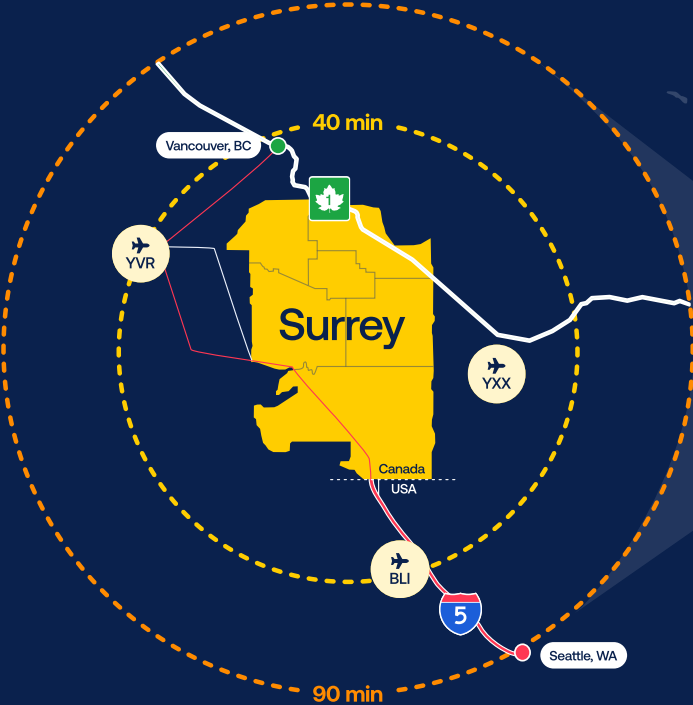
Largest City by Land Area in the Province of British Columbia, Canada

- Land area of 316.11 km² (122.05 sq mi)
- Population: 610,900 (2023 estimate)
- Metropolitan center of the region
- One third of land area protected for food production and agricultural manufacturing

Gateway to the Indo-Pacific Region

- Two land border crossings connecting Surrey with the United States, Canada and Surrey's largest trading partner
- Fraser Surrey Docks is the largest, modern, multi-purpose deep-sea marine terminal on the West Coast of North America
- Surrey is equidistant to three international airports (YVR, YXX, and BLI), connecting directly to over 65 global destinations

Major Connections to Surrey



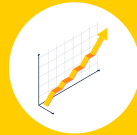
Access to One of the Fastest Growing, Diverse Metropolitan Centres in North America

Surrey welcomes over 1,000 residents each month, growing our young, highly educated workforce.



Diverse Community

- 45% immigrants
- 100+ languages spoken



Rapid Growth

- Population of 1 million by 2040s
- Progressive home building strategy
- Working towards 1:1 jobs per resident workers



Educated Workforce

- 61.5% post-secondary degree holders
- 22% trades workers



Room to Grow

- Jurisdiction with the largest developable urban industrial land within the province of British Columbia



A Major North American Manufacturing Hub in the Pacific Northwest

Surrey is an international logistics and manufacturing hub.

Surrey is one of the largest manufacturing hubs in Western Canada.

1,100 advanced manufacturers in 16 subsectors call Surrey home.

Surrey manufacturers are specialized in over 250 unique industrial capabilities.

15% of British Columbia's manufacturing talent work in Surrey.

An Innovation and Research Powerhouse in Western Canada

Surrey is one of only two Canadian cities with three world-class universities within a 1 km (0.6 mi) radius of the downtown core.

Surrey's Research and Innovation Specializations



Life Sciences

- Biomanufacturing
 - Wearables & Preventative Health
 - Digital Health
-



Engineering Science

- Mechatronics & Industry 4.0
 - Clean Technology and Smart Transportation
 - Sensors and Chips
-



Agricultural Technologies

- Applied Genomics
 - Precision Agriculture
 - Plant-Based Proteins
-

Computer Science

- Quantum Computing
- Artificial Intelligence
- Interactive Arts & Technology

Our Innovation Assets



Plenty & Grace
Food Hub and
Innovation Centre

SFU
WearTech
Labs

UBC@Surrey

Fraser Health
Authority

SFU Medical School
(proposed)

SFU School of
Sustainable Energy
Engineering

Legion Veterans
Village Research
Foundation

PacifiCan
Headquarters

UBC Teaching
Hospital

Surrey Memorial
Hospital

New Surrey
Hospital and BC
Cancer Centre

SFU School of
Mechatronic
Systems
Engineering

Innovation Plaza

SFU School of
Sustainable Energy
Engineering

SFU Fuel Cell
Research Lab

KPU Tech
Campus

Powertech
Labs

SFU School of Interactive
Arts & Technology

Smart Manufacturing Hub

BC Quantum
Algorithms
Institute

Chang Institute for
Entrepreneurship

BC Centre
for Agritech
Innovation

KPU
Applied
Genomics
Centre

KPU Surrey
Campus

Proactive Investments in Progressive, Future-Ready Infrastructure

Infrastructure Investments



Building Development

- CA\$1.5 billion in building permit values each year
- Streamlined civic processes with guaranteed permitting timelines
- Artificial Intelligence assisted permitting tools



Rapid Transportation

- Rapid transit network including Bus Rapid Transit and SkyTrain connecting Surrey to ten other regional cities
- Proposed high-speed rail connecting Seattle and Portland to Surrey



Clean Energy

- 98% of power comes from clean and renewable resources, primarily hydroelectric
- One of the most competitive energy costs in North America
- Municipal district energy system in downtown core



Smart City

- North America's first closed-loop biofuel facility
- Central traffic management centre to reduce congestion
- Citywide 5G and fibre optic broadband network

The Maple Leaf Advantage

Free Trade

15 trade agreements with 51 different countries around the world.

Political Stability

2nd most politically stable country among the G7 countries.

Competitive Taxes & Tariffs

4th lowest combined federal-provincial statutory corporate income tax in the G7.

Universal Healthcare

Universal health coverage means lower costs for employers.

Welcome Skilled Talent

Canada has a visa program designed to welcome highly skilled workers.

Programs & Incentives

Canada offers incentives and tax credits for R&D as well as investment incentives for capital asset acquisitions and large innovation projects.



Invest. Innovate. Thrive.

Contact Us

City of Surrey
Economic Investment Services
13450 - 104 Ave, Surrey, BC
Canada V3T 1V8
invest@surrey.ca



[InvestSurrey.ca](https://www.investsurrey.ca)

