

Regional Workforce Development Partnership Update

NORTHWESTERN
POLYTECHNIC



Chamber of
Commerce
GRANDE PRAIRIE & DISTRICT



Municipal District of
GREENVIEW



THE CITY OF
GRANDE
prairie

Agenda- Regional Workforce Development

- Project Update
- Ongoing Implementation

NORTHWESTERN
POLYTECHNIC



Chamber of
Commerce
GRANDE PRAIRIE & DISTRICT



Municipal District of
GREENVIEW



THE CITY OF
GRANDE
prairie

Workforce Strategy Goals

Collaborate Regionally

Strengthen the Workforce Ecosystem

Promote the Region's Workforce Potential

Expand Youth Workforce Integration

Develop and Retain a Stable Talent Pool

NORTHWESTERN
POLYTECHNIC



Chamber of
Commerce
GRANDE PRAIRIE & DISTRICT

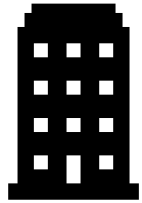


Municipal District of
GREENVIEW



THE CITY OF
GRANDE
prairie

Key Performance Indicators 3 Year Targets (2025)



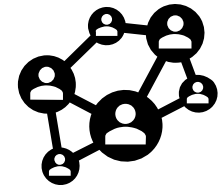
200 Businesses Supported



400 Jobs Supported



100,000 New Impressions



Regional Workforce Support Network

**NORTHWESTERN
POLYTECHNIC**



**Chamber of
Commerce**
GRANDE PRAIRIE & DISTRICT



Municipal District of
GREENVIEW



THE CITY OF
GRANDE
prairie

Key Performance Indicators 3 Year Targets (2025)



\$1,415,200

Total Budget



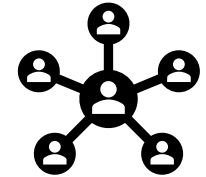
\$706,500

Municipal Support



\$1,766 per Job

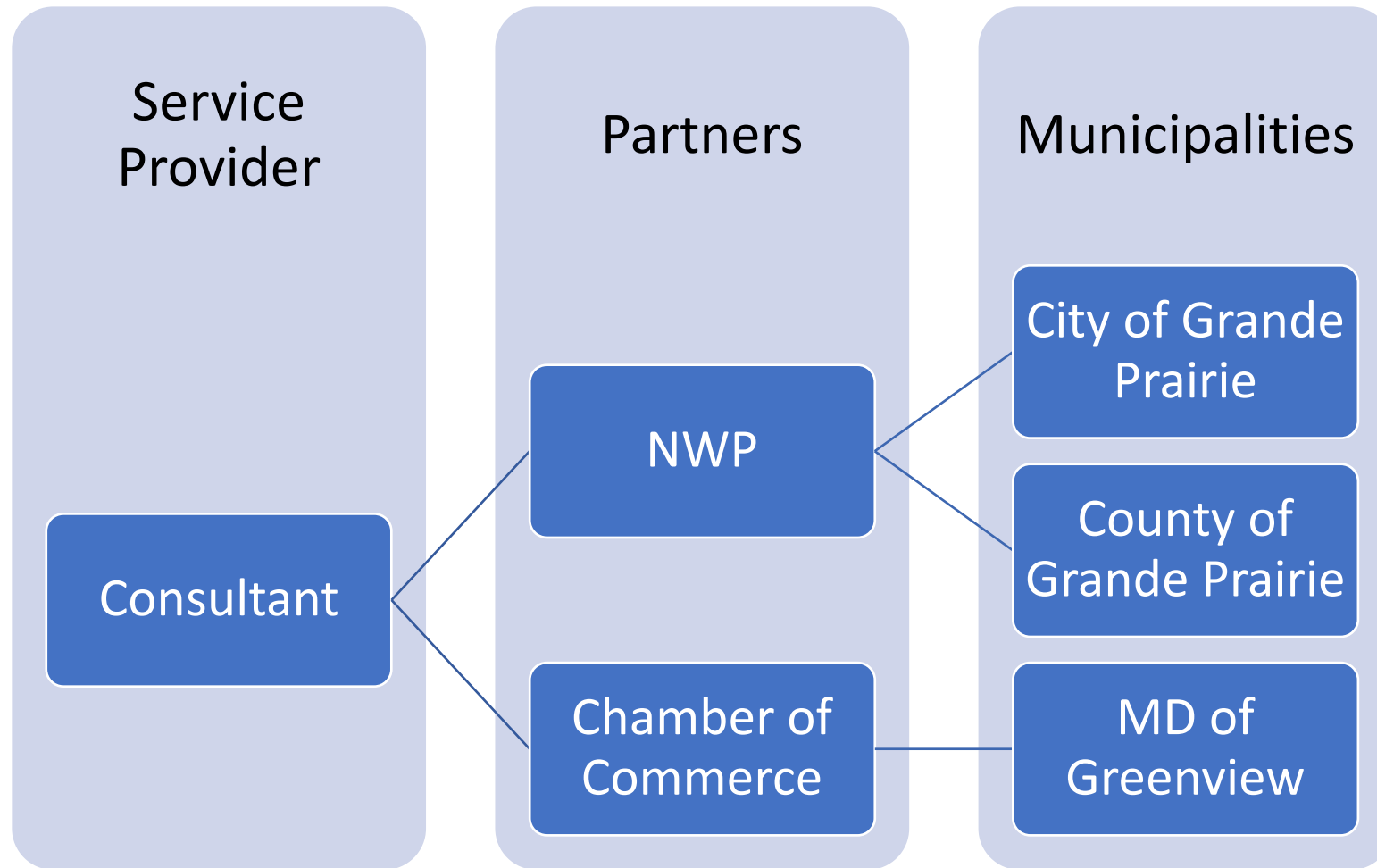
400 Jobs Supported



\$708,700

Leveraged Funds

Implementation



Chamber In-Kind Support

Chamber In-Kind Support	2023
Staff Time	\$17,370
Admin Costs/ Systems Access	\$14,400
<p>The staff time equates to an average of 6 hours a week on the project.</p> <ul style="list-style-type: none"> Partnership liaison with project manager and other contractors Guidance on daily decisions Acting as key spokesperson Budget creation Maintaining page on Chamber website Collaboration on & distribution of press releases Document storage Meeting set up Updating, executing agreements Process payments 	
Total	\$31,770