

CHALLENGES WITH PREVIOUS SIGN DESIGN:

- Outdated and inaccurate information
- Outdated Explore the Bruce logo
- No use of branding
- Outdated mapping
- Challenging to navigate and read



Access Point # 11



Access Point # 5

Saugeen River Access 11

The Saugeen River rises in one of the highest points in Southwestern Ontario, and flows west through scenic rolling landscapes to Lake Huron. Although the river crosses international land, it is bordered for the most part by heavy forest. The official route begins at the Westport Farm Park (Access 3) and ends 102 km downstream at Dorsey's Dam (Access 10) near Southwold.

The river varies from wide, slow-flowing sections to stretches with rapids and eddies, making the Saugeen ideal for family canoeing. The water present here will only accept in early spring when water is high, fast flowing and ideal for leaving the basics of rapid water navigation.

Hanover to Walkerton (Access Point 3-5) 15km / 4 hours
This section includes three dams once used for milling and hydroelectric power generation. From Hanover to the Maple Hill Dam, the waters tend to be deep and slow-moving. Downstream, several rapids appear and intensify before ending at the Upper Dam. This section of the river is the most heavily forested. The only vertical dirt highway east of the Rocky Mountains was constructed at the Walkerton Dam in 1965. Portage of Maple Hill Dam on the south bank, immediately upstream of bridge. The dam is 50 metres (165ft) downstream of the bridge. Portage of Upper Dam is approximately 10 metres (30ft) above the dam on the west bank. Portage at Walkerton Dam is on far west bank, sign posted.

Walkerton to Paisley (Access Point 5-9) 40km / 7 to 10 hours
Downstream of Walkerton, a number of high sand and clay bluffs bordering the river are home to bank swallows and kingfishers. Exercise caution in this section as rapids, large rocks, and flood debris can be encountered. This is the most challenging section of the river. In the downstream portion, forest cover gives way to gently rolling pastures.

Paisley to Southampton (Access Point 9-10) 15km / 9 to 12 hours
Several gentle rapids occur in this segment. In the vicinity of Saugeen Bluffs Conservation Area, clay bluffs along the river form the edge of a west drift deposit. Further downstream, the river is flanked with sandy forest islands that are remnants of a former delta. During periods of low river flow, the sand and silt deposits gradually may occasionally need to be dumped to keep deeper water. Portage of Dorsey's Dam has a dock and steps located on the south bank to meet property.

Distances between Access Points along River

Access 2 to Access 3	2 hrs / 8.5km	Access 9 to Access 10	1 hr / 2.5km
Access 3 to Access 4	1 hr / 5km	Access 10 to Access 11	1 hr / 3.5km
Access 4 to Access 5	3 hrs / 14.5km	Access 11 to Access 12	1 hr / 3km
Access 5 to Access 6	3 hrs / 14.5km	Access 12 to Access 13	1 hr / 8.5km
Access 6 to Access 7	2 hrs / 6.5km	Access 13 to Access 14	2 hrs / 7.5km
Access 7 to Access 8	2 hrs / 6.5km	Access 14 to Access 15	2 hrs / 7.5km
Access 8 to Access 9	3 hrs / 10.5km	Access 15 to Access 16	2 hrs / 3km

Safety Tips
Flooded conditions on the river are affected by natural processes, the seasons and continued change. This publication provides general information only and should not be considered as a detailed guide of current conditions and river conditions.
Please remember that swimming and kayaking can be dangerous activities.
No less than 100m of downstream clearance.
No law, rangers and kayakers must be equipped with their personal flotation device (PFD) or approved life preserver at all times before leaving shore at all times (day or night).
A spare paddle, bailer or manual water pump, and a sound signaling device.
Safety gear can be rented or purchased from outfitters.
Safety gear can be rented or purchased from outfitters.
Safety gear can be rented or purchased from outfitters. Make sure to bring appropriate clothing for both dry and wet weather.

911 In case of an Emergency
You are at 132 Saugeen Bluffs Rd, Saugeen Shores

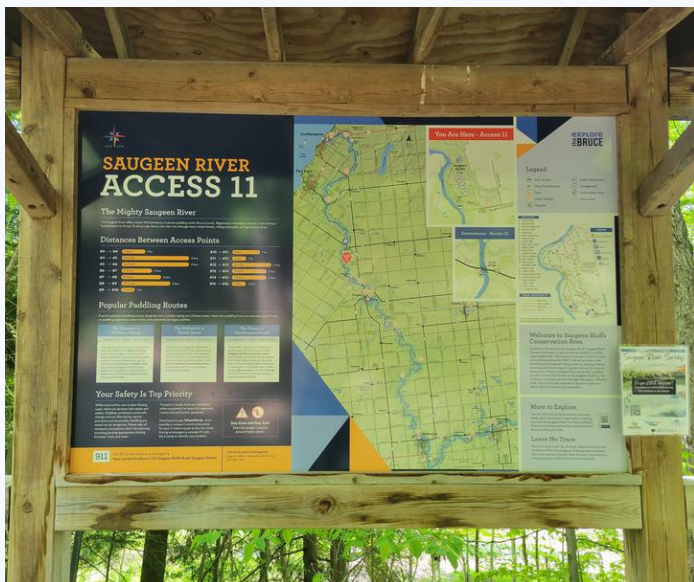
Explore the Bruce

Access Point # 11 Design File

2023 SAUGEEN RIVER SIGNAGE

UPDATES TO NEW SIGN DESIGN:

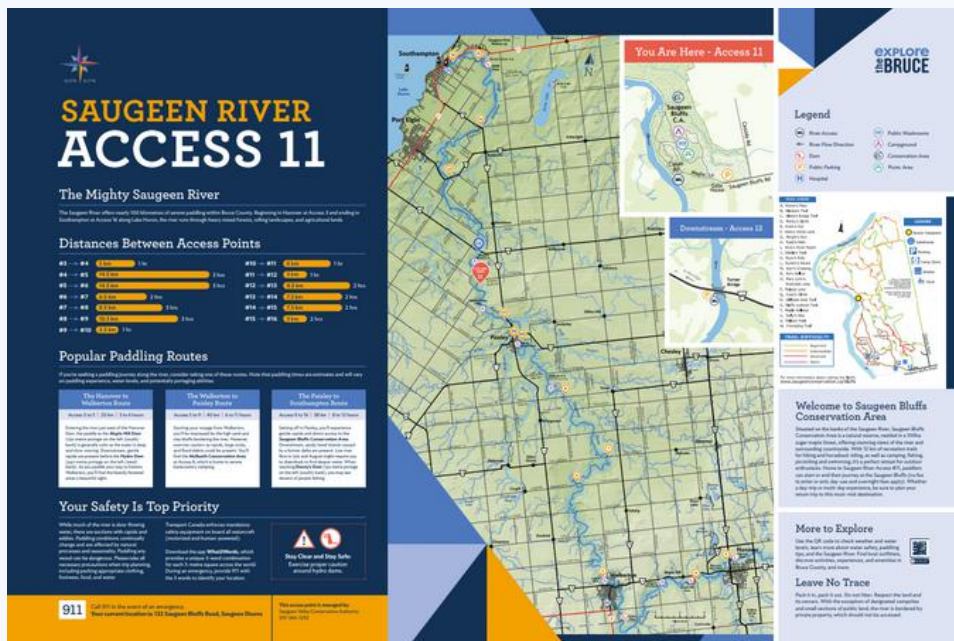
- Strong Explore the Bruce branding elements
- Simplified mapping for ease of use
- Reduced and streamlined content
- Moved variable and changing information online through QR code



Access Point # 11



Access Point # 3



Access Point # 11 Design File

Explore the Bruce Website Page: Saugeen River Access Points

<https://explorethebruce.com/things-to-do/outdoor-activities/canoeing-and-kayaking/river-access-points/>

Explore the Bruce Newsletter Results



22

Clicks to River Access Points Page in
June 2023 Newsletter

Website Page Results



696

Views on River Access Points Page from
May 18 - August 13, 2023

Explore the Bruce Website Page: Saugeen River

<https://explorethebruce.com/saugeen-river/>

QR Code Results



1,125

Views on Saugeen River Page from May 18 - August 13, 2023